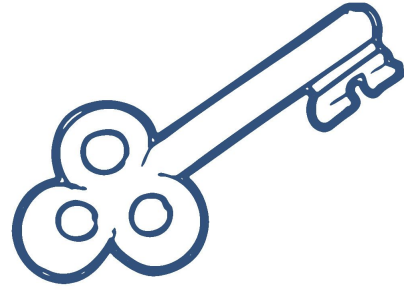


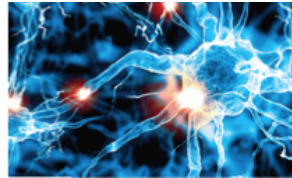
**“No significant learning can occur without significant relationships.**

**Connection is the key.”**

**- Dr. Becky Bailey**



**Connections on the outside build connections on the inside**



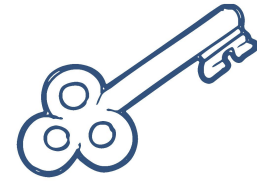
**It starts with WHY**

**HOW do we support growing connections in our students and their learning journey to ensure 90% literacy achievement?**

**Moonshot Unit Connection Checklist to ensure alignment with district goals**

- HOW is the learning and skill development **connected** to the **power standards**?
- HOW are the strategies and activities **connected** to the student needs according to their **data**?
- HOW are the **formative assessments** (checks for understanding) along the way **connected** to the **power standards, the EQ, and the culminating project?** (no dessert projects!)
- Where do students have opportunities to **connect** with **each other, the content and their world? (culture and climate)**
- Where are there authentic and differentiated **opportunities to demonstrate understanding?**

## Moonshot Teaching and Learning Checklist to ensure alignment to Enriched Literacy goals



### Social Emotional Literacy (SEL)

#### In a Connected world **EMPATHY is learning**

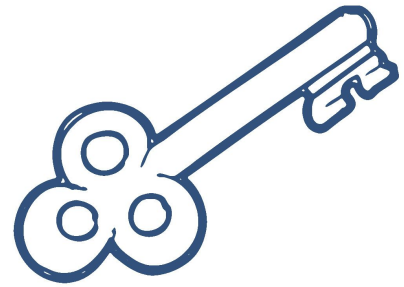
Learning is relationship driven. In order to take the risks necessary to achieve the levels of literacy and learning required to be successful, we must provide learning experiences that grow both awareness and management of emotions and awareness and management of relationships in healthy ways. Kids need to feel safe and connected in order to be emotionally available to learn.

*Learning is a team sport. At the heart of it is working together to grow empathy, engagement, openness, and curiosity.*

- How is the student **connecting** to the **text**?
- How is the student **connecting** to the **learning**?
- How is the student **connecting** to the **teacher**?
- How is the student **connecting** to **other students**?
- How is the student **connecting** the learning **to the world**?
- How are the learning experiences **connecting** to the **lived lives of the students**?
- How are the **learning strategies** and **rituals and routines connected** to building the **social emotional skills** of the students? (self regulation, self-awareness, social awareness, relationship skills, responsible decision making)

## Foundational Literacy

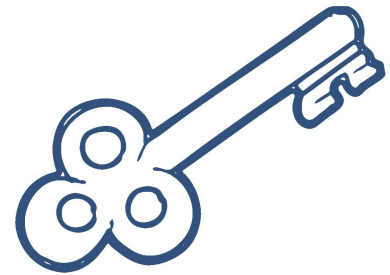
The ability to read, write, think and communicate is the cornerstone of literacy. To be successful students need to have meaningful, active, and multi sensory experiences with a wide range of text. It is important to engage attention, emotion, and memory networks in intentional ways to grow foundational literacy skills.



- How is the foundational skill learning **connected to meaningful and multi sensory experiences?**
- How is the learning **connected** to developing **speaking and listening skills?**
- How is the learning **connected** to developing **phonemic awareness skills?**
- How is the learning **connected** to developing **phonics skills?**
- How is the learning **connected** to developing **fluency skills?**
- How is the learning **connected** to developing **comprehension skills?**
- How is the learning **connected** to developing **writing skills?**
- How is the learning **connected** across the **curriculum?**

## Applied Literacy

A driving or essential question is key to moving students learning through the text to the world of critical thinking, creative innovation, and working together to make a difference. It aligns to the power standards to give an authentic reason to learn and an authentic reason to apply that learning.



- Where do the students have the opportunity to **connect** what they are learning to an **authentic purpose**?
- How does the **culmination** of the experience **demonstrate** the learning?
- How is the learning **connected, meaningful and relevant** for the student?
- How is driving or essential question **connected** throughout the learning?